

Pallet ventilation

Palletventilation is a suitable method to dry agricultural products quickly. This system is available in both fixed and mobile versions. With palletventilation all boxes are ventilated equally which is a big advantage in comparison with other ventilation systems.

The boxes are placed in rows in front of the system. The opening of the pallet connects to the air outlet of the ventilation wall.



The gap of the box pallet determines the amount of air that is blown through the boxes. This results in a limited amount of boxes that can be placed in one row (with a maximum of 12 standard boxes).

Power saving

OmniHout BV has innovated the design of the ventilation systems in such a way the use of power and the air distribution is optimised.

An example is the use of rounded air outlets. Research has shown that this application significantly improves the air distribution and reduces powerusage of the fans.

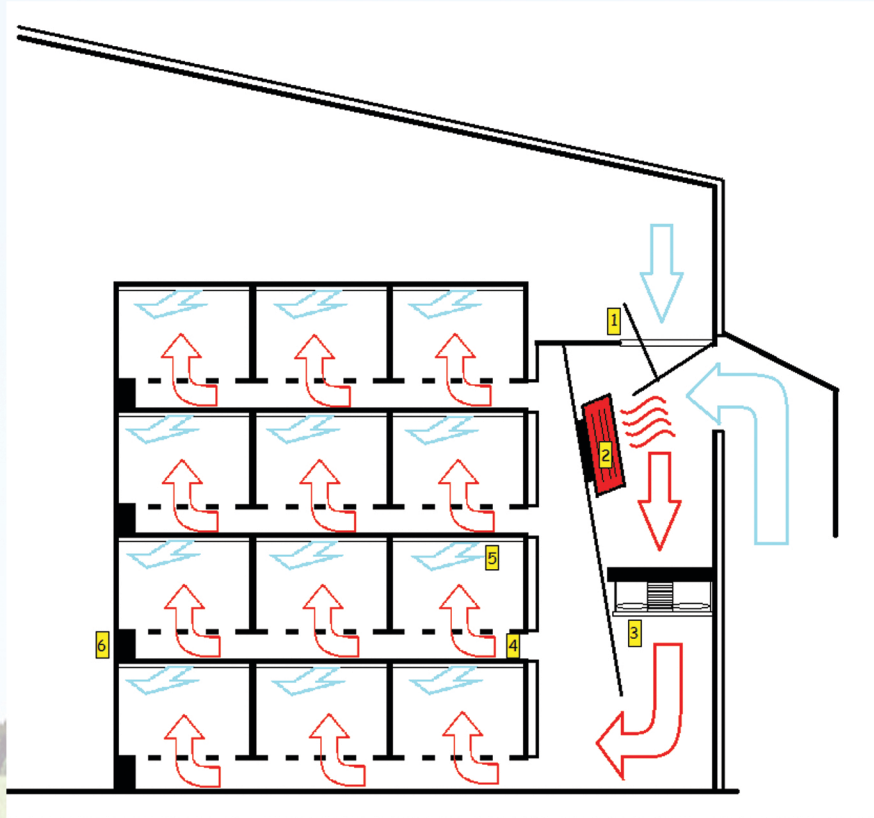


Mobile version

The picture on the left shows a mobile version of a palletventilation system. These mobile units are easily movable. This makes such systems flexible in use so that the space can be used efficiently.

The air circulation

The image below shows a schematic drawing of the air circulation that takes place with palletventilation. Cold air enters the room through the ventilation hatch (1). The hatch is closed when the weather conditions are unfavorable. In that case an intern air circulation takes place. There is a possibility to place a heater to warm up the air (2). The fan (3) blows the air through the outlets of the system. The last pallets are closed with closing blocks (6). As a result the air is forced upwards through the boxes (4). The air can escape through the gaps between two boxes (5).



The boxes

To gain the best results it is necessary to use closed boxes with closed pallet bottoms. This makes complete ventilation through the boxes possible. The air can escape through gaps on the sides of the box. Because of the closed pallet bottoms the boxes can only be moved with a forklift truck and not with a hand pallet truck.



Closed potato boxes



Closed pallet bottom which makes pallet ventilation possible



Gap on the side of the box